



Flat (EPC Rating: B)

FLAT 1 ALTITUDE HOUSE 1 VISTA CLOSE,
SEYMOUR AVE, LUTON, BEDFORDSHIRE,
Per month

£1,950 Per

McLains
— ESTATE AGENCY —



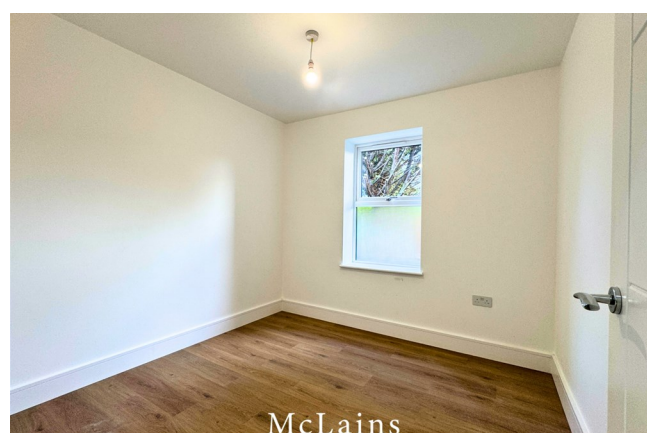
3 Bedroom Flat located in Luton

Welcome to this stunning new build flat located on Seymour Avenue in Luton, Bedfordshire. This contemporary property, completed in 2025, offers a generous living space of 863 square feet, making it an ideal choice for families or professionals seeking comfort and style.

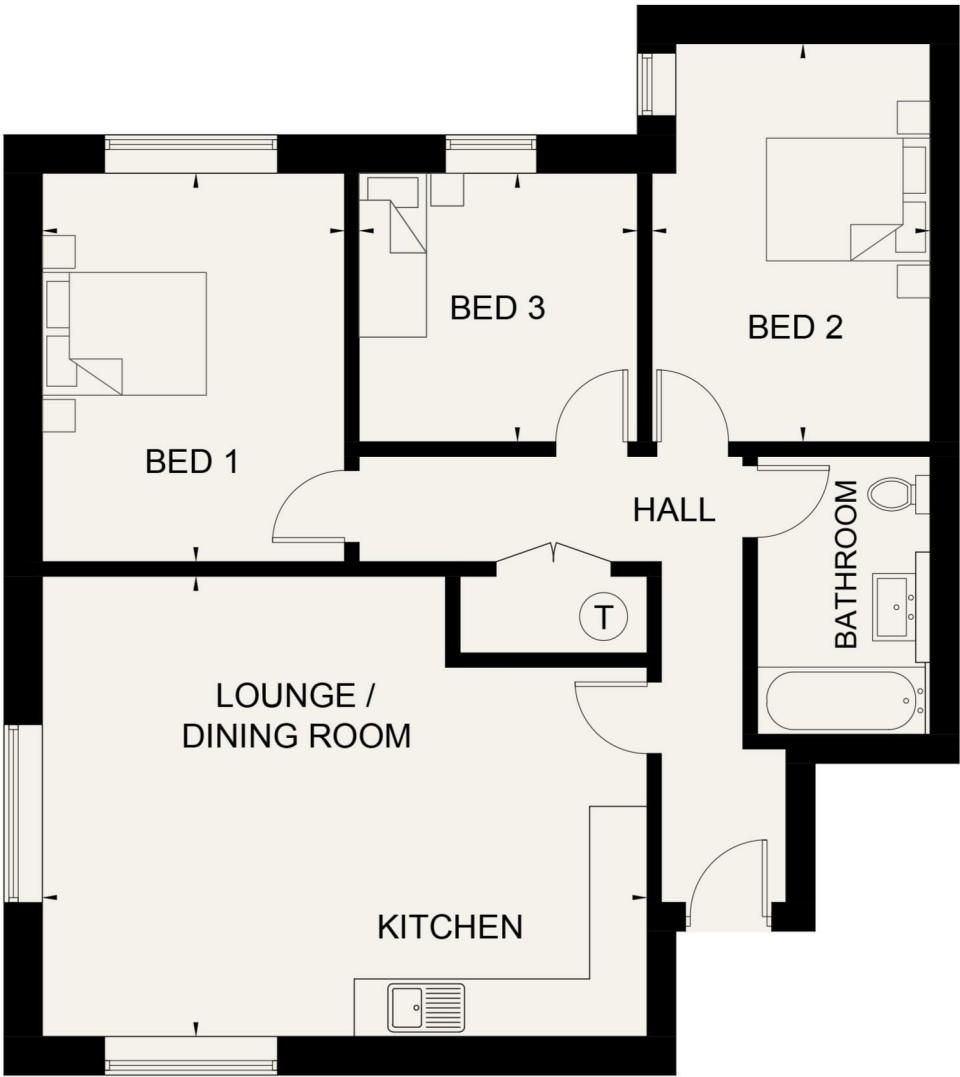
The flat features a spacious reception room that serves as the heart of the home, perfect for entertaining guests or enjoying quiet evenings. With three well-proportioned bedrooms, there is ample space for relaxation and privacy. The modern bathroom is designed with contemporary fixtures, ensuring a pleasant experience for all residents.

One of the standout features of this property is its prime location. Just a mere five minutes from Luton Station, residents can enjoy a swift 24-minute journey to Kings Cross, making it an excellent option for those commuting to London. The surrounding area offers a variety of amenities, including shops, parks, and schools, ensuring that all your needs are met within easy reach.

This property is perfect for those looking for a blend of comfort and modernity in a desirable location. Don't miss the opportunity to make this beautiful flat your new home.



Approximate Gross Internal Area
80.2 sq m / 863 sq ft

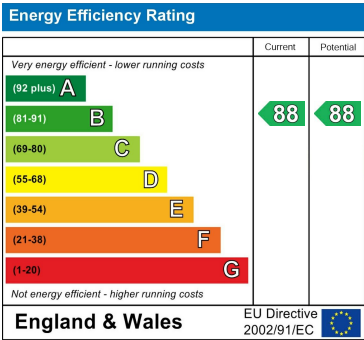


Ground Floor

Council Tax Band

New Build

Energy Performance Graph



Call us on

01582 441225

info@mclains.co.uk

mclains.co.uk

Agents Note: Whilst every care has been taken to prepare these particulars, they are for guidance purposes only. All measurements are approximate and are for general guidance purposes only and whilst every care has been taken to ensure their accuracy, they should not be relied upon and potential buyers are advised to recheck the measurements.